



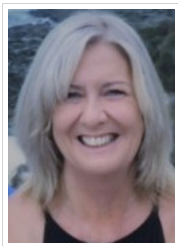
10 Conara Road
 Montagu Bay TAS 7018
 Subscribe: <https://montagubayps.schoolzineplus.com/subscribe>

Email: montagu.bay.primary@education.tas.gov.au
 Phone: 03 6244 1897



21 February 2019

PRINCIPALS MESSAGE



Term 1 is well and truly under way with all classes engaged in purposeful learning. Sometimes the learning is not always apparent to the onlooker though, particularly when students are learning through intentional play – this image explains what might be going on for your child although it's not obvious:

This year we are lucky to have Ms Kiata Ryan teaching a day a week from the Respectful Relationships Teaching and Learning Package that has been developed by the Department of Education as part of their Safe Homes, Safe Families Action Plan. Each class will have 40 minutes per week for one term throughout the year. Classroom teachers will be working alongside Ms Ryan during these lessons explicitly teaching how to develop and maintain respectful relationships. Respectful Relationships Education is a whole community approach to teaching and reinforcing a culture of creating and maintaining respectful relationships with everyone.

The program will aim to provide students with explicit opportunities for developmentally appropriate learning, about gender stereotypes and roles, keeping safe, respectful relationships and who to ask for help if your safety is threatened. You can access further information by following these links

[https://documentcentre.education.tas.gov.au/Documents/Info sheet-SupportingStudents-Respectful-Relationships-Education.pdf](https://documentcentre.education.tas.gov.au/Documents/Info%20sheet-SupportingStudents-Respectful-Relationships-Education.pdf)

<https://respectfulrelationships.education.tas.gov.au/parents-and-community/>

A new road safety campaign has been developed in consultation with the Department of Education and the Department of State Growth. One of the components of this is that some schools have been chosen to have a personalised “Love 40” car bumper sticker and Montagu Bay is one of those schools! Look for yours in your child’s bag as they were handed out yesterday- if your family receives more than one feel free to give them to friends and relatives, the wider we spread the road safety message the better it is for our children.

On Thursday 28th February , we are having our “Meet the Staff Breakfast’ from 8:00am, come along and enjoy an egg & bacon roll, buy a coffee from the van and get to know the wonderful staff who , along with our families, make Montagu Bay Primary such a great place.

Kind regards,

Cathy Young

WHAT'S GOING ON?

There are many ways to find out what is going on in the school.

Add the App to your phone so that all information is at your fingertips. (Flyer Attached below)

Schoolzine Calendar: You can access letters from home and forms from the calendar. Click on calendar, click on event then view event then view flyer. (This will have further information about the event)

Montagu Bay Primary Website Calendar -

<https://montagubayprimary.education.tas.edu.au>

Outside Noticeboards in Early Childhood and Upper Primary

Calendar of Events outside the office.

FROM THE OFFICE

School Times

Kindergarten	Monday, Tuesday,	9am –
Yellow & Blue:	Wednesday	2:45pm
Prep – Year 6	School buildings open and Duty of Care commences:	8:30am
	Lessons commence	9:00am
	Recess	10:30am
		–
		10:50am
	Lunch	12:35pm
		– 1:20pm
	Classes dismissed	2:45pm

The office is open daily from 8.15am until 3.45pm.

Messages for students - Please phone the office by 2.15pm.

Validation Forms – IMPORTANT have you returned your child/ren Validation forms? Please update any details that have changed, sign and return to the school office.

Levies - Invoices have been issued. Statements will be received every month until payment is complete. There are a number of options for paying, please refer to your invoice.

STAS forms are available from the office if you are eligible for government assistance. If you are having difficulty with payment, please do not hesitate to come and see Kirby at the office.

LIL FAMILIES



LIL Families 2018

Welcome back to all our LIL families and welcome to all our new families who will be joining us this year. We are looking forward to another exciting year with the youngest members of our school community.

This year we will be running two LIL sessions again: Beginning on Thursday 21 February.

Thursday mornings 9.00-10.30am (Birth to 4 years) Term 1 and 2.

Term 3 and 4 this becomes Pre Kinder.

LiL enrolment forms are available from the office and must be returned with proof of residence in our catchment area before starting LiL 2018. (This must be provided every year) Any questions please pop in to see me or email me at: jennifer.nichols@education.tas.gov.au

Uniform shop

OPENING TIMES

The Uniform Shop will open every Thursday from 8:30am – 9am in the uniform shop.

Order forms are available at the school office, if you are unable to attend at these times. I will send a note home with your child when it is ready to be collected.

We now have XL Hats in stock available for \$10.00

SECOND HAND UNIFORM

We are in urgent need of good quality second hand polo tops, jumpers/jackets and dresses,

Particularly small sizes. If you have any to spare please consider donating them to the uniform shop.

Thank you Jo Baldwin
Uniform Shop Coordinator

Canteen

Canteen will open on Thursdays and Fridays at recess and lunch. Just a few new items for the menu and we will be continuing Friday Sushi (Fortnightly)

1. Sushi Friday starting the 22nd Feb fortnightly thereafter (orders need to be in by the Tuesday).
2. Offering homemade chicken burgers Lot \$4.50 and Lettuce and mayo \$4.00
3. We are also offering mini hash browns (3 to a bag for \$3.00) Garlic Focaccia are not available anymore (sorry) Tas Bakeries are no longer making them.
4. Unfortunately the party pies that are offered in the winter menu will no longer be available as they too are no longer being produced by Tas Bakeries.
5. On a good note, I am still baking muesli slice and muffins. Over the counter snacks are also available too. These are Popcorn, Potato sticks, pretzels and Pea snacks. These items are all \$1.00
6. The Cool Crew are also contributing to the Canteen by making some yummy choc truffles that can be purchased, two for 50cents.
7. We also sell insulated lunch bags for \$12.00. These can be purchased through the canteen or the uniform shop.

We rely on volunteers to help run the Canteen. Without your support it just isn't possible to maintain this service.

There are two time slots we require volunteers for, **9am – 11am; or 11am – 1 pm.**

Please check out our Facebook group MBPS Canteen if you would like to volunteer.

Before/After School Hours Duty of Care

Clarence City Council after School Hours Care operates from the hall each school day from 7.30am – 8.30am and 2.45pm – 6.00pm. To obtain an admission form and parent pack, you may call into the Clarence Council chambers or phone the OSHC office on 6217 9610

Montagu Bay Primary school hours are from 8:30am through to 2:45pm.

Scholastic Book Club

Issue 1 catalogues have now been delivered to classrooms and orders are due to the office by 9am, on Friday 22nd February.

For parents new to the school or those who are new to 'Bookclub', ordering is simple:

1. Select the books you would like to purchase
 - 2a. Order online (LOOP) and pay via credit card (no order form required to be sent in)
- OR
- 2b. Fill out your order and return the form and the cash/cheque to school in a labelled and sealed envelope or zip-lock bag.

The books are delivered to your child's class and our school receives 20% of the order value which contributes valuable resources to our Literacy Pro reading program.

I am happy to hold 'gift orders' at the office for parents to collect, but please make sure it is clearly written on the order form. If gifts are ordered through the LOOP system, it may be worth sending a note along in an envelope marked 'Scholastic Book Club' to be sure that this message reaches me and items are held for collection.



Headphones for School

To support the learning opportunities in our classes at Montagu Bay Primary School we ask that where possible each child has their own headphones for use at school. This is not compulsory, of course, but from a hygiene point of view it is preferable.

Japanese Classes

Is your child interested in learning about Japanese language and culture?

Anita Wedd, MBPS's Japanese teacher runs small classes at lunchtime on Fridays for children in grades 1 to 4.

Classes will begin again on 15th February. A small fee is involved.

For more information please contact Anita at anita.wedd@education.tas.edu.au

STUDENT BANKING

School banking day is Tuesday each week.

We will be sending home for those who need more information on how to get started with the CBA banking process.

ATTENDANCE

If your Child is absent, please notify the school office via the below options.

Schoolzine – clicking on the absentee form
Phone – 6244 1897
Email – montagu.bay.primary@education.tas.gov.au
Note - send a note to the office

Move Well Eat Well

Ride2School Day

On Friday 22 March, MBPS students are invited to participate in National Ride2School Day. Students are encouraged to join more than 350,000 students across the nation, who will ride, walk, scoot and skate to school on this day! Keep an eye out in the newsletter closer to the event for more information.

Soccer season



Montagu Bay Junior Soccer Club 2019

The Montagu Bay Junior Soccer club offers soccer to all children, from Kinder through to Grade 6. Soccer season is just around the corner and we look forward to welcoming back returning players, and meeting new faces in the coming weeks.

Registration will be advised through the soccer club facebook page, please check the link below over the next week or so.

https://www.facebook.com/Montagu-Bay-Junior-Soccer-Club-246950678659583/?epa=SEARCH_BOX

Registrations will close March 17th so that teams can be finalised and submitted to the Eastern Region Junior Soccer

Association. The soccer season will commence on Saturday May 4th, and runs until September 7th. Rosters are advised approximately one week prior to games. Games are played on Saturday mornings at local grounds on the Eastern Shore, for more details, please see

<https://www.facebook.com/Eastern-Region-Junior-Soccer-Association-506555499401700/>

Registration/information/Mini clinic afternoon

On Monday March 4th, 3.15pm, in the area outside the canteen we will be running a registration information, and uniform session. Please come along and try soccer and get prepared for the soccer season!

Registration will be \$90 per child, and \$80 for subsequent children in the same family. This will be the first opportunity to collect a soccer top, a \$10 deposit will be required, cash only, which is returned at the end of the season. Extra days will be notified at a later stage if you are not able to attend on this day to collect a top.

Players need to supply their own black shorts and protective equipment, soccer boots, shin pads and mouth guard are recommended.

Club Hoodies \$35 (Optional), and yellow socks \$11 will be available for purchase on this day also.

Annual General Meeting: Will follow on Monday March 4th, 5.15pm at the Foreshore Park, below school.

All Welcome, especially anyone who may be able to coach a team, or interested in joining the committee

For any further details, please contact

***Chris Thomas, Club President,
ph. 0419 313 472.***